

**PRINCIPAL DATA:**

**TYPE:** GARTEC ASPEN LIFT

**DRIVE SYSTEM:** STATIC SCREW WITH ROTATING NUT

**CAPACITY:** 225KG

**TRAVEL:** VARIABLE (UP TO A MAXIMUM OF 12000)

**NO OF STOPS:** 2 SHOWN (UP TO A MAXIMUM OF 6 AVAILABLE)

**SUPPLY VOLTAGE:** 240V 1PH 50HZ (SINGLE PHASE AVAILABLE)

**RUNNING CURRENT:** 4.7AMP

**STARTING CURRENT:** 10AMP

**STANDARD COLOUR:** RAL 9003 WHITE

(OTHER RAL COLOURS AVAILABLE)

**DOOR DATA:**

**TYPE:** GLASS

**NO OF DOORS:** 2 SHOWN (UP TO A MAXIMUM OF 6 AVAILABLE)

**FIRE RATING:** NOT AVAILABLE

**OPENING SIZE:** 800 X 2000MM

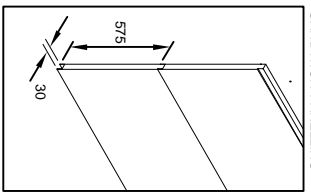
**DOOR FRAME:** INTEGRAL TO SHAFT ENCLOSURE

**DOOR/FRAME COLOUR:** WHITE POWDER COATED RAL 9003

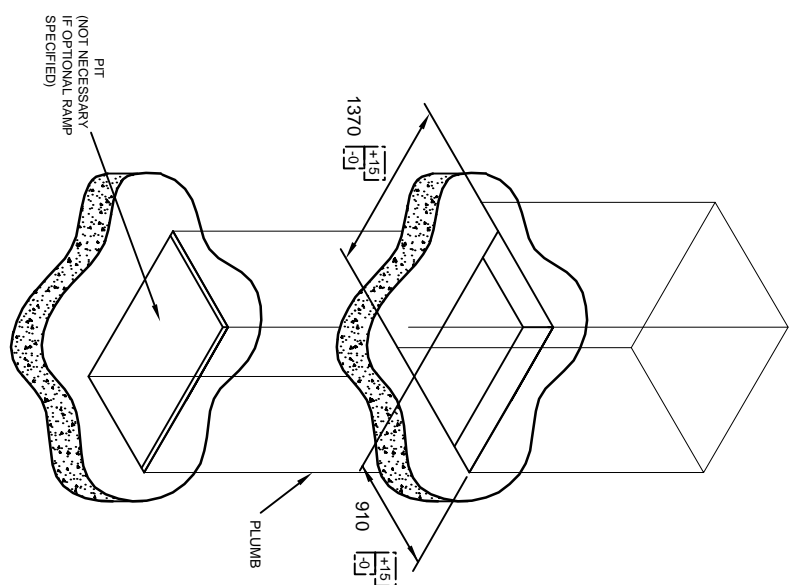
**DOOR GLASS:** VARIABLE

**CLOSER:** MANUAL (AUTOMATIC VERSION AVAILABLE)

**FURNITURE:** FITTINGS IN ANODISED ALUMINIUM



POWDER COATED IF ALTERNATIVE (OPTIONAL RAL COLOUR SPECIFIED)



**The ASPEN 2 STOP LIFT**

Drawn by R PRICE	Scale NTS	Date 19/06/09
Drawing No. SALES-500	Issue 2	