

DO NOT SCALE

ALL DIMS IN MM

Safe access to motor compartment must be provided

700 ACCESS DOOR WIDTH

IMPORTANT contact us to discuss motor access positions if unsure

700 ACCESS DOOR HEIGHT

Dimension required to achieve floor level serving

To suit site with a maximum of 18 metres and 6 stops

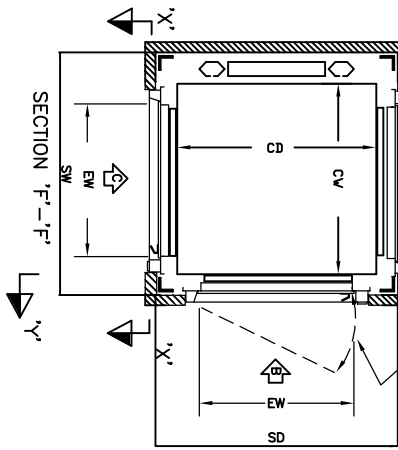
PIT (See table)

TRAVEL

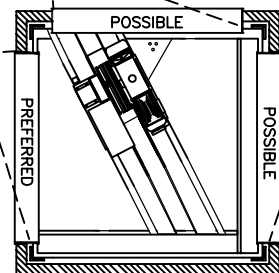
HEADROOM (see table)

IF IN DOUBT - ASK

Denotes entrance positions available (up to 3 per floor).
The swing of the landing door = 945



POSSIBLE DOOR POSITIONS



POSSIBLE MOTOR ACCESS

IMPORTANT Normally 2 motor compartment access doors are to be provided by the builder. 1 at position 'C' and 1 at 'D' or 'A'. Current regulations state that access to all parts of machinery requiring maintenance must be planned to be both safe and accessible.

This information relates to standard Trolleylift models held in stock - please contact us to discuss. We can offer the optional extra of a intercom system. The lift car and landing door finish is grey bakel pointed (RAL7038). We would be happy to provide you with a no obligation written quotation upon request.

If a pit cannot be provided we can set the door above floor level and a ramp will have to be provided by others or provide our low pit option.

Standard Stock Dimensions (mm)

Model	Load	Car			Shaft			Entrance		Headroom	Fit depth
		QW	CD	CH	SW	SD	EW	EH			
250H	250 kg	1000	1000	1200	1320	1320	900	1200	2600	350	
250H	250kg	1000	1000	1375	1320	1320	900	1375	2600	350	
300H	300 kg	1000	1000	1800	1320	1320	900	1800	3000	600	

BUILDER'S WORK

1. Form trimmed aperture through floor to relevant shaft size above. If more than two floors are to be served, each aperture must be plumb and in line, one above the other.
2. Provide a pit at the bottom floor served to the relevant shaft size x 350 (250H) or 600 (300H) deep. Ensure the base (pit floor) of the lift shaft is flat, dry, fully waterproof and capable of withstanding the downward dead load imposed by the lift and lift equipment. These loads vary according to model, number of floors served and travel dimensions. IMPORTANT if an accessible void (ie lower level, car park, pavement, road etc) exists below the base of the lift shaft you MUST contact the helpline for guidance.
3. Make provisions to enable safe access to the motor compartment to include hinged lockable access door(s) the doors must swing outwards away from the lift shaft so please plan the area in front of the lift shaft to preclude any services etc that may have to run by this area
4. Provide a permanent 3-phase 15amp triple pole switched isolator capable of being locked in the OFF position. Position isolator adjacent to (not in) the lift shaft at the top floor served 2m above FFL. Electrical details are given below.
5. Provide a 1-phase 13 amp switched socket for lighting in the motor compartment.
6. An additional dedicated 1-phase 10amp power supply will be required if the optional intercom system is required.
7. Services other than those required for the operation of the Microlift MUST NOT be sited in or pass through the lift shaft.

After installation

8. Completely enclose the lift to comply with current fire and safety regulations, ensuring there are no gaps which could become finger traps. Please note: DO NOT allow ingress of rubble, dust, cement etc into the lift shaft. Infill gaps between the landing door sills and finished floor level.
9. Provide safe access to the motor compartment (usually above top floor lift entrance on 'C' face) by means of hinged and lockable doors each 700 mm wide x 700 mm high. Please note that screwed panels do not meet current safety regulations.
10. Provide suitable equipment to facilitate safe access to the motor compartment. IF SAFE ACCESS IS NOT PROVIDED WE MAY NOT BE ABLE TO SERVICE THE LIFT EQUIPMENT

Electrical Details

Load	Power	kw/h	hp	start	run
				amps	amps
250 kg	3-phase	0.66	0.9	9	4
300 kg	3-phase	0.86	0.9	9	4

Trolleylift
250/300H

ARRANGEMENT SHOWN
HINGED LANDING DOORS

SECTION 'Y'-'Y'
IF AN ACCESSIBLE SPACE EXISTS BELOW LIFT BASE
PLEASE SEE NOTE 2 OF BUILDER'S WORK

SECTION 'X'-'X'

FOR GUIDANCE ONLY
For initial information only - do not use for construction purposes

Data Sheet No
GA-TL-HD-T

Issue No
2

Date
1-7-2008

Service Lifts