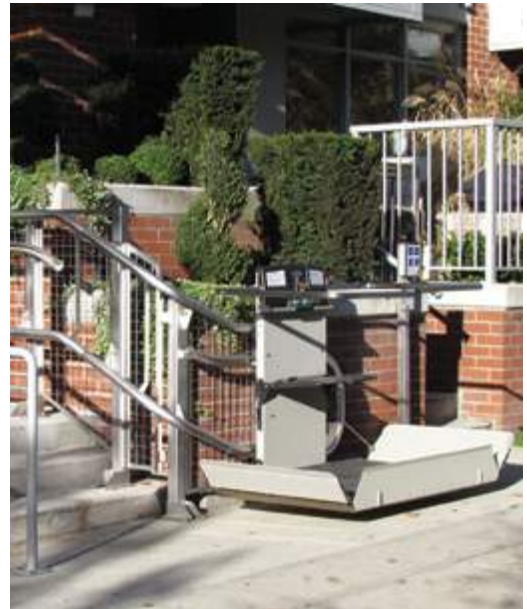




# GSL ARTIRA

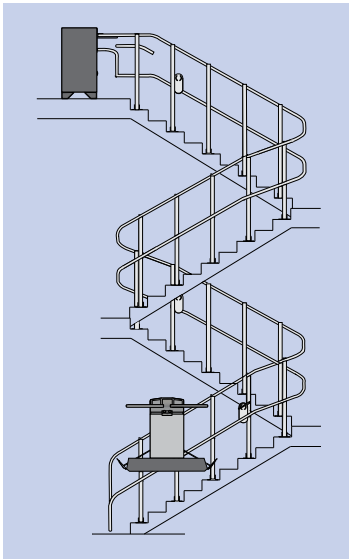
INCLINED PLATFORM LIFT FOR STRAIGHT & TURNING STAIRWAYS



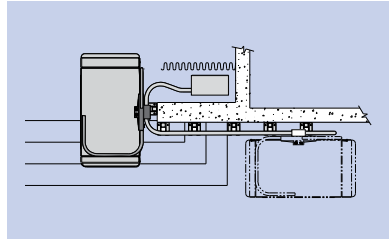
The GSL Artira inclined platform lift provides an advanced access solution for straight, turning or radiating stairways. The attractively styled platform travels along guide rails mounted to the inside or outside of the stairway. Design flexibility allows for extensive customization of the GSL Artira. Suitable for indoor or outdoor applications, the GSL Artira can be installed in commercial and residential applications.

## CONFIGURATIONS

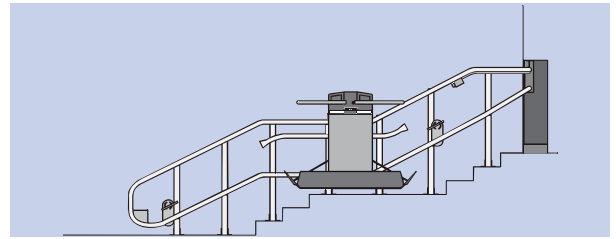
### Design Versatility of the GSL Artira



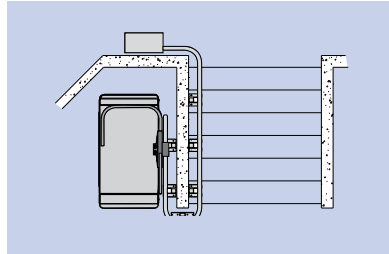
Turning Multi-Stop Stairway



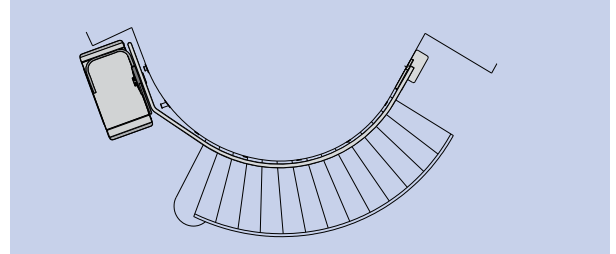
Access onto a Stage



Straight Stairway with Intermediate Horizontal Section

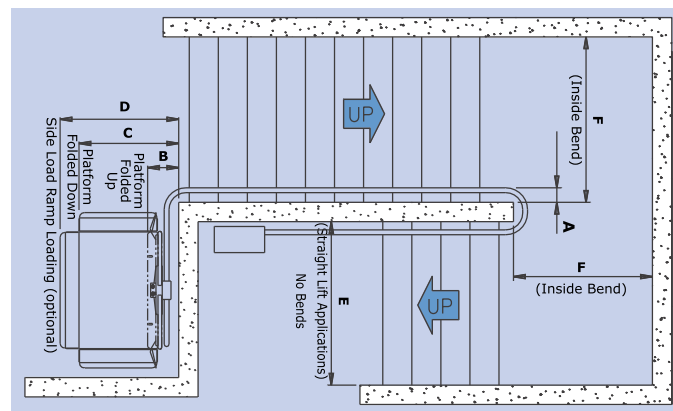


Straight Stairway with Platform Storage off the Stairs



Radiating Stairway

## TURNING CLEARANCES

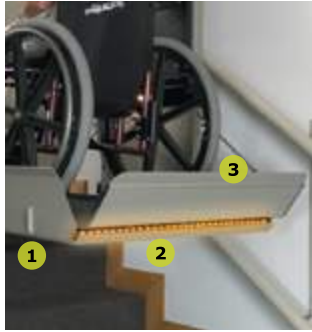


### ADA Size

### Other Platform Sizes

| Dim. | Attachment Method | 800 x 1220 mm<br>(31 <sup>1</sup> / <sub>2</sub> " x 48") |                                | 800 x 1050 mm<br>(31 <sup>1</sup> / <sub>2</sub> " x 41 <sup>3</sup> / <sub>8</sub> ") |                                | 800 x 900 mm<br>(31 <sup>1</sup> / <sub>2</sub> " x 35 <sup>3</sup> / <sub>8</sub> ") |                                | 700 x 750 mm<br>(27 <sup>1</sup> / <sub>2</sub> " x 29 <sup>1</sup> / <sub>2</sub> ") |                                |
|------|-------------------|---|--------------------------------|--|--------------------------------|---|--------------------------------|---|--------------------------------|
|      |                   | mm  | in                             | mm   | in                             | mm  | in                             | mm  | in                             |
| A    | Direct Mount      | 125   | 4 <sup>7</sup> / <sub>8</sub>  | 125  | 4 <sup>7</sup> / <sub>8</sub>  | 125   | 4 <sup>7</sup> / <sub>8</sub>  | 125   | 4 <sup>7</sup> / <sub>8</sub>  |
|      | Tower Mount       | 150   | 5 <sup>7</sup> / <sub>8</sub>  | 150  | 5 <sup>7</sup> / <sub>8</sub>  | 150   | 5 <sup>7</sup> / <sub>8</sub>  | 150   | 5 <sup>7</sup> / <sub>8</sub>  |
| B    | Direct Mount      | 320   | 12 <sup>5</sup> / <sub>8</sub> | 320  | 12 <sup>5</sup> / <sub>8</sub> | 320   | 12 <sup>5</sup> / <sub>8</sub> | 330   | 13                             |
|      | Tower Mount       | 345   | 13 <sup>5</sup> / <sub>8</sub> | 345  | 13 <sup>5</sup> / <sub>8</sub> | 345   | 13 <sup>5</sup> / <sub>8</sub> | 355   | 14                             |
| C    | Direct Mount      | 1015  | 40                             | 1015   | 40                             | 1015  | 40                             | 900   | 35 <sup>3</sup> / <sub>8</sub> |
|      | Tower Mount       | 1040  | 41                             | 1040   | 41                             | 1040  | 41                             | 925   | 36 <sup>3</sup> / <sub>8</sub> |
| D    | Direct Mount      | 1230  | 48 <sup>3</sup> / <sub>8</sub> | 1230   | 48 <sup>3</sup> / <sub>8</sub> | 1230  | 48 <sup>3</sup> / <sub>8</sub> | 1115  | 44                             |
|      | Tower Mount       | 1255  | 49 <sup>3</sup> / <sub>8</sub> | 1255   | 49 <sup>3</sup> / <sub>8</sub> | 1255  | 49 <sup>3</sup> / <sub>8</sub> | 1140  | 45                             |
| E    | Direct Mount      | 1035  | 40 <sup>3</sup> / <sub>4</sub> | 1035   | 40 <sup>3</sup> / <sub>4</sub> | 1035  | 40 <sup>3</sup> / <sub>4</sub> | 920   | 36 <sup>1</sup> / <sub>4</sub> |
|      | Tower Mount       | 1060  | 41 <sup>3</sup> / <sub>4</sub> | 1060   | 41 <sup>3</sup> / <sub>4</sub> | 1060  | 41 <sup>3</sup> / <sub>4</sub> | 945   | 37 <sup>1</sup> / <sub>4</sub> |
| F    | Direct Mount      | 1225  | 48 <sup>1</sup> / <sub>4</sub> | 1185   | 46 <sup>5</sup> / <sub>8</sub> | 1185  | 45 <sup>1</sup> / <sub>8</sub> | 1025  | 40 <sup>3</sup> / <sub>8</sub> |
|      | Tower Mount       | 1250  | 49 <sup>1</sup> / <sub>4</sub> | 1210   | 47 <sup>5</sup> / <sub>8</sub> | 1210  | 46 <sup>1</sup> / <sub>8</sub> | 1050  | 41 <sup>3</sup> / <sub>8</sub> |

**Safety Features**



- 1** Passenger and pedestrian safety is assured by under-platform sensors that stop the platform if it encounters an obstruction.
- 2** Flashing amber Pedestrian Safety Lights are located at either end of the platform deck, alerting pedestrians of the platform in the stairway, and illuminating the platform threshold for safer boarding.
- 3** Bi-Directional Ramp Sensing detects obstructions on the stairs and prevents a wheelchair from being off-center on the platform deck.

**Vandal-Resistant Platform Storage**



With its remote drive system, the Artira has the most compact folded platform in the industry, leaving maximum clear space on the stairs and landings. When folded, the Artira's platform conceals and protects the folded safety arms and platform controls. For further vandal resistance in public buildings, a robust electric Platform Security Lock can be fitted.

**Ultra-Quiet Drive with PCC™ System**



The Ultra-Quiet Drive is located in a locked drive box away from the platform and uses a solid state inverter to drive a silent yet powerful 2 horsepower electric motor. The Programmable Configuration Controller (PCC™) allows the Artira to be customized for each stairway application, including slowing at corners and landings, automatic folding, building fire alarm integration and many other sophisticated capabilities.

**Smart-Lite Technology™**



Garaventa Lift's computer-based lift control system intuitively guides the user through the operating sequence by illuminating the appropriate button to push. Fold and unfold functions are fully automated and work with a simple momentary push of the illuminated button.

**Curved Safety Arms**



Curved safety arms further enhance passenger safety during platform boarding and while travelling on the stairway. The Artira's safety arms have fully automated operation and electronic obstruction sensing.

**Design Assistance**





# GSL ARTIRA

Need Design Assistance?

Call your local Garaventa Lift representative

## SPECIFICATIONS

**Platform:** Large ADA compliant, mid-size, compact and residential sizes

**Power Requirements:** 208-240 VAC, 50/60 Hz on a dedicated 20 Amp circuit | Auxiliary power system available (battery powered)

**Rated Load:** 300 kg (660 lbs)

**Drive System:** Upper landing 2 HP Drive Box (Roped Sprocket Drive) | Optional Compact Drive system available

**Speed:** 6 m/min (20 ft/min), slowing prior to corners and when approaching or departing landings | Optional 9m/min (30ft/min)

**Controls:** Call Station (standard): Keyed with constant pressure switches, 24VDC, equipped with Garaventa Smart-Lite Technology™ | Platform (standard): Keyless with constant pressure directional switches, 24VDC, equipped with Emergency Stop Switch

**Overspeed Safety:** Located at the bottom of the tube assembly | Contains mechanical overspeed sensor and brake, with electrical drive cut-out protection

**Safety:** Emergency manual lowering and folding | Sensors: Standard under platform obstruction detection | Optional side of hanger optical sensing | Bi-Directional Ramp Sensing | Curved safety arms | Pedestrian safety lights

**Finishes:** Durable electrostatically applied and baked textured satin grey paint | Optional stainless steel finish and custom RAL colors

**Optional Features:** Attendant remote control | Keyed platform operation for additional security | Auto-fold option keeps stairway clear | Side load platform for confined lower landings | Fold-down seat with seat belt | Dek-Lite (only available with fold-down seat) | Integrated Pedestrian Handrails | Pedestrian Audio Visual Alert (wall mount) | Building fire alarm integration | Outdoor weatherproofing package | Vandal resistant platform lock (electric)

**Warranty:** Two years | Extended warranty (five additional years) \* USA/Canada only

**Contact us today**



Printed in Canada  
15814-K-PB

© Garaventa Lift. As we are continuously improving our products, specifications outlined in this brochure are subject to change without notice.

Authorized Garaventa Lift Representative